

PENTAX Optio S10 PC Connection Manual

You can transfer images and movies captured with a digital camera to your computer and then display and manage them by installing the software included on the provided CD-ROM to your computer and connecting your digital camera to your computer with the USB cable. This section explains how to install the provided software "ACDSee for PENTAX" and the other necessary preparations for enjoying your digital camera pictures and movies on your computer.

PENTAX and Optio are trademarks of PENTAX Corporation.
© 2007 ACD Systems Ltd. All rights reserved. ACDSee and the ACDSee logo are trademarks of ACD Systems Ltd. in Canada, the U.S., Europe, Japan and other countries.

Microsoft and Windows are registered trademarks of Microsoft Corporation in the United States and other countries.

Windows Vista is either a registered trademark or trademark of Microsoft Corporation in the United States and/or other countries.

Mac OS and Macintosh are registered trademarks of Apple Computer, Inc.

DivX, DivX Certified, and associated logos are trademarks of DivX, Inc. and are used under license.

All other brands or product names are trademarks or registered trademarks of their respective companies.



Software Provided

Windows

- ACDSee for PENTAX 3.0 (Image viewing/editing/managing software)

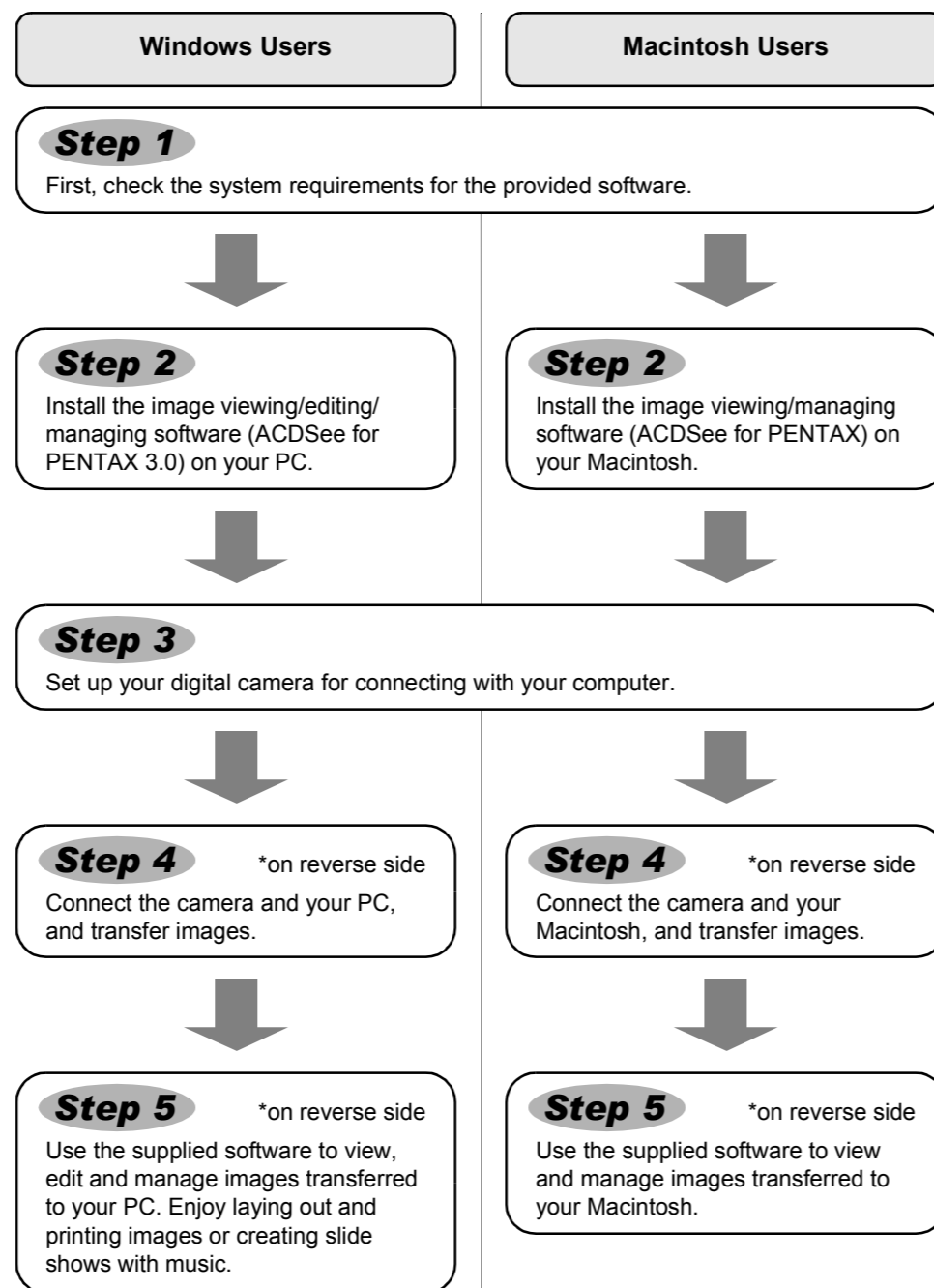
Macintosh

- ACDSee for PENTAX (Image viewing/managing software)

Caution You are recommended to use an AC adapter connected to a power outlet when connecting the camera to a computer. If the battery runs out of power while images are being transmitted to the computer, the image data may be lost or damaged. When using an AC adapter, make sure that the AC plug cord is properly connected to the camera.

57917

01-200707 Printed in Philippines



Windows, Macintosh Step 1

System Requirements

Windows System Requirements

- Caution**
- Applications that utilize USB connections are not supported in Windows 95, Windows 98, Windows 98SE, Windows Me, and Windows NT.
 - In order to play movies recorded using Optio S10 on Windows 2000, Windows XP, and Windows Vista, you are required to install Windows Media Player 9.0 or later and the DivX codec (CPU: Pentium 4 with 2.0 GHz or higher, or Pentium M with 1.0 GHz or higher recommended.).

USB connection

- PCs with preinstalled versions of Windows 2000, Windows XP, and Windows Vista must be updated with the latest version.
- USB port must be standard equipment

Application Software

<ACDSee for PENTAX 3.0>

(Nine languages: English, French, German, Spanish, Italian, Russian, Chinese [traditional and simplified], Korean, Japanese)

- OS Windows 2000/Windows XP/Windows Vista
- CPU Intel Pentium® III or higher
- Memory 256 MB minimum (512 MB or higher recommended)
- Hard disk space 100 MB minimum (1 GB or higher recommended)
- Monitor Display adapter capable of displaying a minimum of 256 colors
- CD-ROM drive
- Internet Explorer 5.0 or later
- Windows Media Player 9.0 or later
- DirectX 9.0 or later

* Operation is not guaranteed on all PCs meeting the system requirements.

The versions of Internet Explorer, Windows Media Player and Windows Installer Service required for use of ACDSee for PENTAX 3.0 are not included in the provided CD-ROM (S-SW68). These can be downloaded from the following sites and installed.

- Internet Explorer
<http://www.microsoft.com/ie>
- Windows Media Player
<http://www.microsoft.com/windows/windowsmedia/>
- Windows Installer Service
<http://support.microsoft.com/default.aspx?scid=kb;EN-US;292539>

Windows Step 2

Installing the Software

Install the image viewing/editing/managing software (ACDSee for PENTAX 3.0).

- Caution**
- Windows Media Player 9.0 or later must be installed in your PC to install ACDSee for PENTAX 3.0.
 - When multiple accounts have been setup in Windows 2000, Windows XP, or Windows Vista, log on with an account that has administrative rights before installing the software.

- 1 Turn your PC on.
- 2 Insert the CD-ROM (S-SW68) into the CD-ROM drive.

The PENTAX Software Installer screen appears.

For Windows Vista

Use the following procedure to display the language selection screen when the Auto Play screen appears.

- 1) Click [Run Setup.exe].
- 2) Click [Allow].

The language selection screen appears.

If the PENTAX Software Installer screen does not appear

Display the PENTAX Software Installer screen following the steps below.

- 1) Double-click [My Computer] on the desktop.
- 2) Double-click the [CD-ROM drive (S-SW68)] icon.
- 3) Double-click the [Setup.exe] icon.

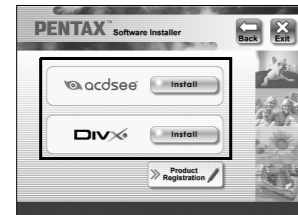
- 3 Choose a language from the displayed screen.

The software selection screen appears.



- 4 Installing DivX.

If the proper version of DivX is not installed on your PC, install it before installing ACDSee for PENTAX 3.0. Click the [Install] button next to [DivX®]. Follow the on-screen instructions and enter the registration information when the Setup screen appears. When installation is completed, the software selection screen reappears.



- 5 Click the [Install] button next to [acdsee™].

Follow the on-screen guidance and enter the registration information when the Setup screen appears. Reboot your PC after installation is finished.



memo Operation is not guaranteed if the proper version of DivX is not installed on your PC. Be sure to install DivX to ensure full operation of ACDSee for PENTAX 3.0.

Macintosh Step 2

Installing the Software

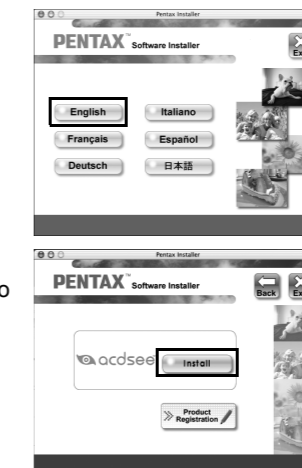
Install the image viewing/managing software (ACDSee for PENTAX).

- 1 Turn your Macintosh on.
- 2 Insert the CD-ROM (S-SW68) in the CD-ROM drive.
- 3 Double-click the CD-ROM (S-SW68) icon.
- 4 Double-click the [Install ACDSee] icon.

The PENTAX Software Installer screen appears. Double-click the [Master Installer] icon to display the PENTAX Software Installer screen.

- 5 Choose a language from the displayed screen.

The ACDSee for PENTAX installer screen appears.



- 6 Click the [Install] button next to [acdsee™].

The setup screen appears. Follow the on-screen guidance to input registration information and install the software.

memo If the message [CarbonLib-xxxxx could not be found] appears during installation: You must add the extension file "CarbonLib" to the Extension folder in the System folder in order to install the provided software in Mac OS 9.2. This message appears when this extension file does not exist or when an older version of the file exists. The latest version of the CarbonLib file is available on the Apple website. Download the file and then install it. Apple website: <http://www.apple.com/> *Contact Apple for detailed information on how to use the CarbonLib file.

Macintosh System Requirements

Caution Playing movies on Macintosh is not supported.

USB connection

- For Macintosh computers with Mac OS 9.2/Mac OS X (10.1.2 or later) preinstalled
- USB port must be standard equipment
- * Installation of the driver is not necessary.

Application Software

<ACDSee for PENTAX>

(Six languages: English, French, German, Spanish, Italian, Japanese)

- OS Mac OS 9.2/Mac OS X (10.1.2 or later) (requires the latest version of CarbonLib)
- CPU PowerPC 266 MHz or higher
- Memory 8 MB minimum
- Hard Disk space 6 MB minimum
- CD-ROM drive

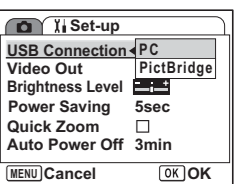
* Operation is not guaranteed on all PCs meeting the system requirements.

Windows, Macintosh Step 3

Setting Up Your Digital Camera

Setting the USB Connection Mode to [PC]

- 1 Press the MENU button.
- 2 Press the four-way controller (▶) to display the [X Set-up] menu.
- 3 Use the four-way controller (▲▼) to select [USB Connection].
- 4 Press the four-way controller (▶).
A pull-down menu appears.
- 5 Use the four-way controller (▲▼) to select [PC].
- 6 Press the OK button twice.



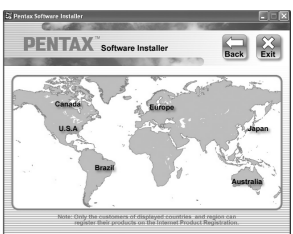
Caution If your camera's USB mode was set to "PictBridge" when you connected via USB to the PC, you must disconnect the camera from the computer and set the camera's USB mode to "PC" before reconnecting the camera to the computer.

Product Registration on the Internet

Please click [Product Registration] on the software selection screen in **Step 2**.

A world map for Internet Product Registration is displayed.

If your PC is connected to the Internet, click the displayed country or region and then follow the instructions to register your product.



Thank you very much for your cooperation.

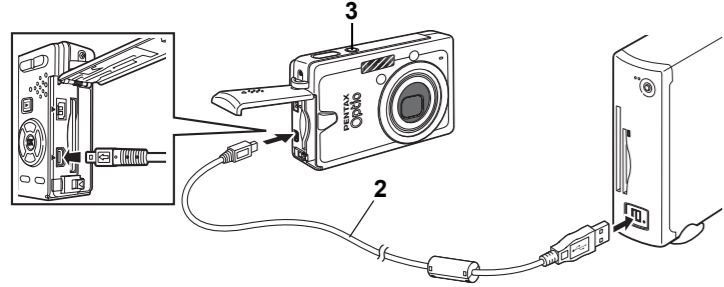
memo Only customers in displayed countries and regions can register their products on the Internet Product Registration.

Transferring Images to a Windows PC

When the digital camera is connected to your Windows PC and the camera is turned on, the PC automatically recognizes the camera and the confirmation dialog box for transferring images (the Device Detector screen) appears.

Connecting the Camera and PC

- 1 Turn your PC on.
- 2 With your camera turned off, connect it to your PC using the USB cable.
If there is no SD Memory Card in the camera, the images stored in the built-in memory will be transmitted to your PC.

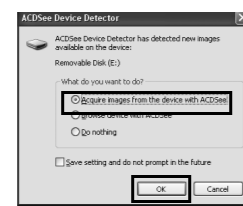


- 3 Turn your camera on.
The Device Detector screen appears automatically. If the Device Detector screen does not appear, display and copy the images following the steps in "When the Device Detector screen does not appear".

The access lamp blinks while the camera is connected to a PC with the USB cable.

Transferring Images

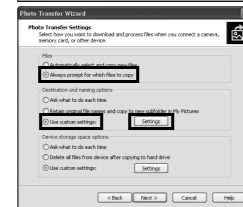
- 4 Confirm that [Acquire images from the device with ACDSee] is checked and click [OK].



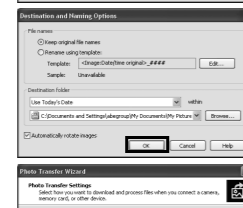
- 5 Click [Next].



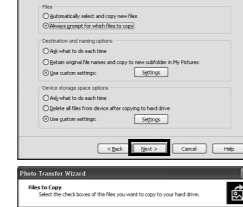
- 6 Under File Options make sure that [Always prompt for which files to copy] is selected, and under File Name and Save Destination Options that [Use custom settings] is selected. Then click [Settings] to the right.



- 7 Specify the name and save destination of the image, and click [OK].



- 8 Click [Next].



- 9 Select an image to copy and click [Next].

The image is copied to the PC.

- 10 Click [Finish].

The ACDSee for PENTAX 3.0 Browser starts.



When the Device Detector screen does not appear

- 4 Double-click the [ACDSee for PENTAX 3.0] icon on the desktop.



- 5 Double-click [My Computer].



- 6 Double-click [Removable Disk].



If the SD Memory Card has a volume label, the volume label name appears instead of [Removable Disk]. A new unformatted SD Memory Card may show the manufacturer name or model number.

- 7 Double-click the [DCIM] folder.

Images are stored in folder [xxxPENTX], where "xxx" is a three-digit folder number.

If "Date" is set for the "Folder Name" in the "X1 Set-up" menu, a folder named for each day is displayed (taking January 26 as an example, the folder name would be: "three digit folder number_0126").



- 8 Select the folders you want to copy to the PC.



- 9 Select [Copy To Folder...] from the [Edit] menu.

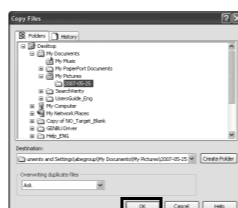
The Copy Files screen appears.



- 10 Specify the destination folder.

- 11 Click [OK].

The image is copied to the PC.



Disconnecting the Camera from Your PC

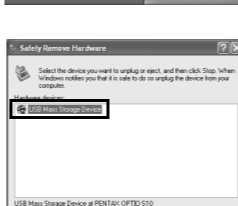
- 1 Double-click the [Safely Remove Hardware] icon in the task bar.

The Safely Remove Hardware screen appears.



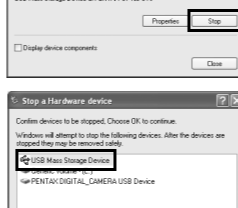
- 2 Select [USB Mass Storage Device] and click [Stop].

The Stop a Hardware device screen appears.



- 3 Select [USB Mass Storage Device] and click [OK].

A message appears indicating that the hardware can be safely removed.



- 4 Click [OK].

- 5 Disconnect the USB cable from your PC and the camera.

• If the camera (removable disk) is being used by an application such as ACDSee for PENTAX 3.0, the camera cannot be disconnected until the application is closed.
• The camera will automatically switch to the Playback mode when the USB cable is disconnected.

Macintosh **Step 4**

Transferring Images to a Macintosh

Connecting the Camera and Macintosh

- 1 Turn your Macintosh on.
- 2 With your camera turned off, connect it to your Macintosh using the USB cable.

If there is no SD Memory Card in the camera, the images stored in the built-in memory will be transmitted to your Macintosh.

- 3 Turn your camera on.

The camera is recognized as [NO_NAME] ([untitled] in Mac OS 9) on the desktop. The drive name can be changed.

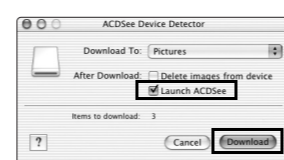


• If the SD Memory Card has a volume label, the volume label name appears instead of [NO_NAME]. A new unformatted SD Memory Card may show the manufacturer name or model number.
• The access lamp blinks while the camera is connected to a Macintosh with the USB cable.

Transferring Images

- 4 Specify a save location, make sure that [Launch ACDSee] is checked, and click [Download].

After images are copied to your Macintosh, the browser for ACDSee for PENTAX starts.



• When [Delete images from device] is checked, images are deleted from the camera after transfer is complete.
• Even if camera images are not transferred, they can be directly displayed on the Macintosh from a camera connected to the Macintosh.
• To edit images, first transfer them to your Macintosh.

Disconnecting the Camera from Your Macintosh

- 1 Drag [NO_NAME] on the desktop to the trash.
If the SD Memory Card has a volume label, drag the icon of that name to the trash.
- 2 Disconnect the USB cable from your Macintosh and the camera.

• If the camera (removable disk) is being used by an application such as ACDSee for PENTAX, the camera cannot be disconnected until the application is closed.
• The camera will automatically switch to the Playback mode when the USB cable is disconnected.

Using the Software

Using ACDSee for PENTAX 3.0

ACDSee for PENTAX 3.0 lets you view, edit, organize, search for, share, and print images.

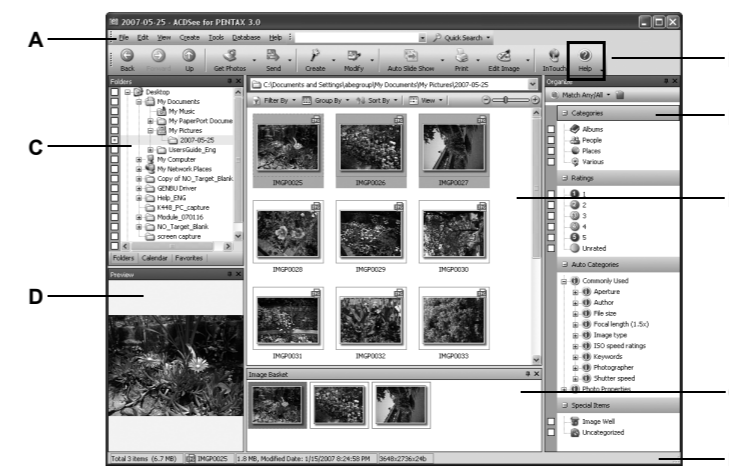
Starting ACDSee for PENTAX 3.0

- 1 Double-click the [ACDSee for PENTAX 3.0] icon on the desktop.

ACDSee starts and the main window, which is called the browser, appears.



ACDSee Browser Interface



- A Menu bar
You can access the various menu commands.
- B Toolbar
Provides quick access to shortcuts for frequently used tasks and functions.
- C Folders pane
Displays the configuration of folders in your computer. When you browse a folder, the contents of the folder appear in the File List pane.
- D Preview pane
Displays a preview of the image or media file currently selected in the File List pane. You can change the size of the preview image or play back the media file.
- E File List pane
Displays the contents of the currently selected folder or the results of the most recent search, in other words the file or folder that matches the search item. It is the only pane that always appears in the Browser and it cannot be hidden or closed.
- F Category pane
Files assigned to Categories, Ratings, Auto Categories, and Special Items are displayed in a list. Use the Easy Select Bar (the column of check boxes to the left of the Folders or Categories pane) to mix and select Categories, Ratings, Auto Categories and Special Items.
- G Image Basket pane
Displays files selected in the File List pane. By choosing images and files and putting them in the Image Basket pane, you can use the editing and creating functions on images from different folders and categories.
- H Status bar
Displays information and properties for the selected file.

Using the Help Pages

Refer to the help pages for a more detailed description of how to use each function.

- 1 Click the [Help] button on the tool bar.
The help screen appears.
- 2 Double-click the desired topic.



Using ACDSee Showroom

ACDSee Showroom displays a slideshow of your favorite images on the desktop in a small window. You can start up to 16 slideshows at once.

The ACDSee Showroom is preset to display the slideshow window on top of other applications. Also, you can set the ACDSee Showroom window to automatically run when the computer starts. You do not need to open ACDSee to use ACDSee Showroom.

Create a Desktop Slideshow with ACDSee Showroom

- 1 In ACDSee, browse to the folder which contains the images you want to add to the slideshow.
- 2 Select [Create ACDSee Showroom] from the [Create] menu
The slideshow starts immediately.
See the help file for detailed instructions.

Using ACDSee for PENTAX

ACDSee for PENTAX lets you view, organize, search for, share, and print images.

Starting ACDSee for PENTAX

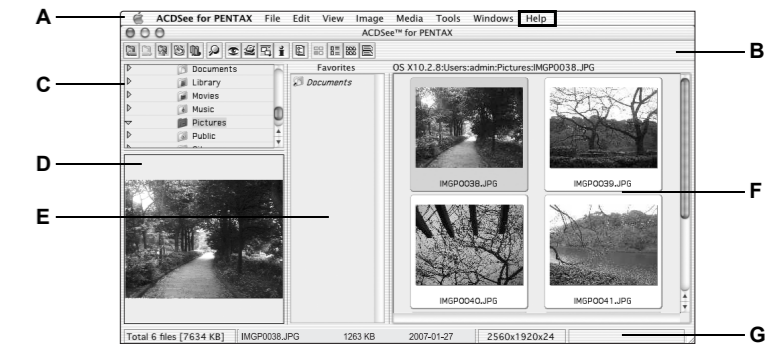
- 1 Double-click the [ACDSee] folder inside the [Applications] folder.
- 2 Double-click the [ACDSee for PENTAX] icon.

ACDSee starts and the main window, which is called the browser, appears.



ACDSee For PENTAX

ACDSee Browser Interface



- A Menu bar
You can access the various menu commands.
- B Toolbar
Provides quick access to shortcuts for frequently used tasks and functions.
- C Folders pane
Displays the configuration of folders in your computer. When you browse a folder, the contents of the folder appear in the File List pane.
- D Preview pane
Displays a preview of the image or media file currently selected in the File List pane. You can change the size of the preview image or play back the media file.
- E Favorites pane
You can add frequently used items (folders, etc.).
- F File List pane
Displays the contents of the currently selected folder or the results of the most recent search, in other words the file or folder that matches the search item. It is the only pane that always appears in the Browser and it cannot be hidden or closed.
- G Status bar
Displays information and properties for the selected file.

Using the Help Pages

Refer to the help pages for a more detailed description of how to use each function.

- 1 Select [ACDSee™ Help] from [Help] on the menu bar.
The help screen appears.
- 2 Click the desired topic.